

Flood Barriers

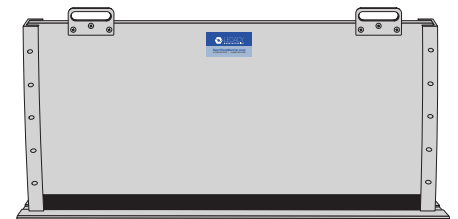
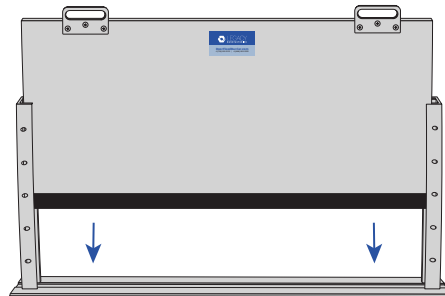
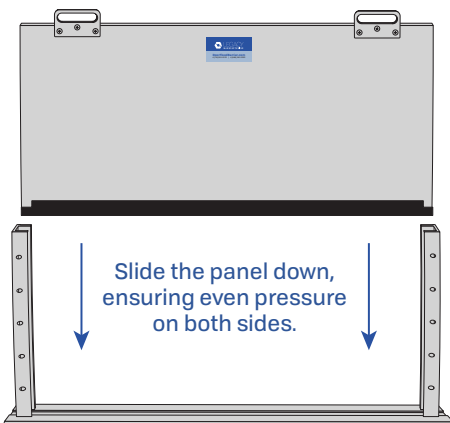
Standard Technical Data

Product Specifications	
Panel	5052 marine aluminum alloy
Frames	Channel 6062 alloy T5-T6, with 10-32 stainless steel Allen head tightening screws every 8" on center.
Seal	Sponge Neoprene within the channels and Solid Neoprene 3-Finger Rubber on the bottom of the panel.
Hardware	#10 x 1-1/4" FHPH with plastic expansion tube anchors. Snap covers for safety provided for the top of the channels and for the mounting holes.
Installation	Can be installed on hollow metal, aluminum or wood frames; and on concrete, brick or metal surfaces.
Floor Surface	Optional flat 1/4" x 2" bevels on 2 sides of the aluminum plate - #319 Threshold



Operating Instructions

Once your channels are properly installed, the panel will easily slide down into place creating a tight seal.



Inserting Shield: With label facing out, insert the bottom of plate into channels. Lower the shield until there is a firm and even connection with the sill. Tighten the tension screws.

Removing Shield: Loosen the tension screws so the shield can be properly removed. Pull straight up on the plate to remove from channel.

Storing Shield: Once you have removed the shield from the channels, you can store the shield indoors. Make sure that there is no weight against the gasket.